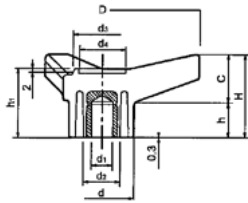


**4701 - Knobs – Three Prong - Female**

Available in Black Reinforced Thermoplastic • Threaded Female Brass Insert

Part Number	D	H	d1	d2	d3	d	d4	h	h1	C
11-K3P45B6*	45	21	M6	-	14.5	16	10	10	17.5	11
11-K3P65B8*	65	28	M8	-	21	22	15	12	23	16
11-K3P85B10*	85	36	M10	18	27	30	20	15	30	21
11-K3P105B12	105	45	M12	20	32	35	24	19	37	26
11-K3P125B12*	125	53	M12	26	40	42	27	22.5	44	30.5

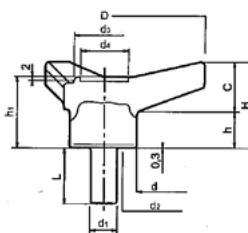


\*Available with open threaded brass insert

**4701 - Knobs – Three Prong - Male**

Available in Black Reinforced Thermoplastic • Treated Threaded Steel Stud

Part Number	D	H	d1	d3	d	d4	h	h1	C	L
11-K3P45S6-25	45	21	M6	14.5	16	10	10	17.5	11	25
11-K3P65S8-30	65	28	M8	21	22	15	12	23	16	30
11-K3P85S10-40	85	36	M10	27	30	20	15	30	21	40
11-K3P105S12-50	105	45	M12	32	35	24	19	37	26	50
11-K3P125S12-50	125	53	M12	40	42	27	22.5	44	30.5	50

**4725 – T- Handle - Female**

Black Reinforced Thermoplastic • Threaded Brass Bush

Part Number	A	H	d	d1	L
11-HPTB50B5	50	24	14	M5	-
11-HPTB60B6	60	32	16	M6	-
11-HPTB70B8	72	32	18	M8	-

