

LED Light Pipes

Rectangular Panel Mount

Neat indicator light solution.

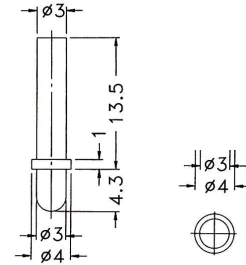
35-LEM3

Part Number	A
35-LEM31.8	1.8
35-LEM32.2	2.2



3mm Extension

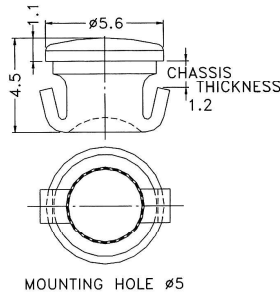
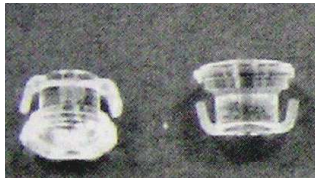
35-LEM5



5mm Panel Mount

Snaps into 5mm hole.

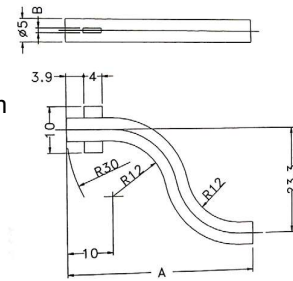
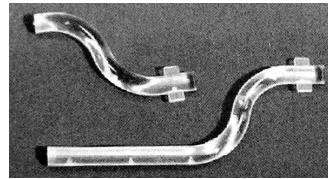
35-LEM7



Light Pipes

35-LPG Series

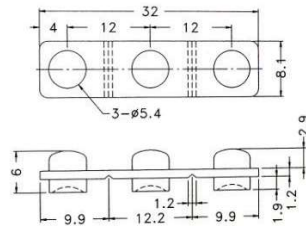
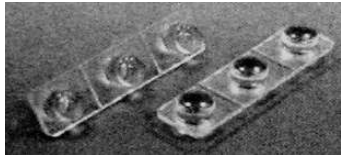
35-LPG42 A = 41.5 B = 1.3 mm
35-LPG77 A = 76.5 B = 1.2 mm



5mm Panel Mount - 3 way

Snap to make 1 way & 2 way.

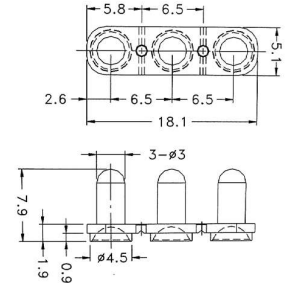
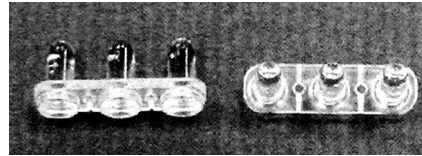
35-LEM4



3mm Panel Mount - 3 way

Snap to make 1 way & 2 way.

35-LEM11

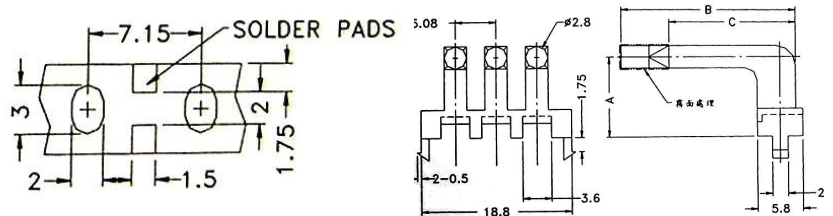
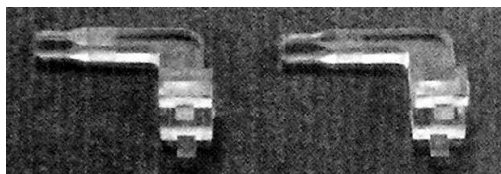


Right Angle SMT Light Pipe - 35-LPE1 Series

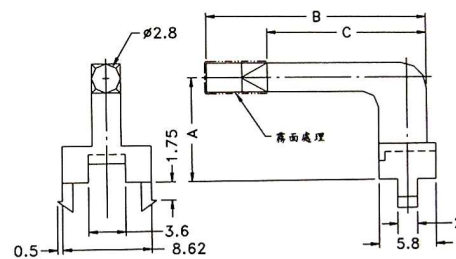
Multiple centreline heights & multi-levels • Available also as 2, 3 and 4 way

Part Number	A	B	C
35-LPE10516	5.0	16.0	10.0
35-LPE10519	5.0	19.0	13.0
35-LPE10522	5.0	22.0	16.0
35-LPE11016	10.0	16.0	10.0
35-LPE11019	10.0	19.0	13.0
35-LPE11022	10.0	22.0	16.0
35-LPE11516	15.0	16.0	10.0
35-LPE11519	15.0	19.0	13.0
35-LPE11522	15.0	22.0	16.0

Material: Polycarbonate



PCB LAYOUT.



PCB LAYOUT.

3 Way