

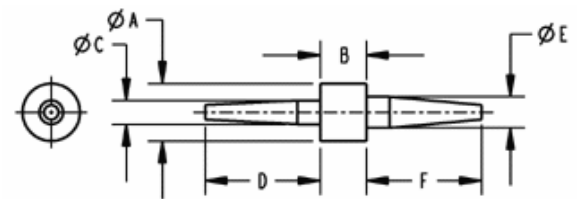
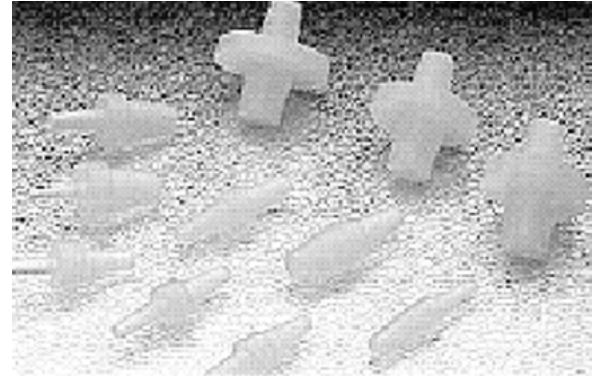
Silicone Washer Plugs

Washer Plugs are designed for those applications which require a hole to be plugged and the surrounding surface area to be masked. Typical applications include the masking of the grounding area around a threaded port.

Opposite side of plug can be used as a tab for easy removal. This combines with its reusability to make it an attractive alternative to discs.

Features

- Resistant to temperatures up to 316°C.
- Specifically designed for powder coating and E-coating applications.
- Will withstand multiple passes through most coating processes.
- Will not contaminate paint line.
- Custom sizes available with minimal tooling investment
- Stock colour is clear.



Part Number	A	B	C	D	E	F
12-SLW026-033	6.35	5.08	2.62	12.70	3.30	12.70
12-SLW026-045	6.35	5.08	2.62	12.70	4.57	12.70
12-SLW026-053	6.35	5.08	2.62	12.70	5.31	12.70
12-SLW026-039	7.92	5.08	2.62	12.70	3.94	12.70
12-SLW026-053	7.92	5.08	2.62	12.70	5.31	12.70
12-SLW026-069	7.92	5.08	2.62	12.70	6.99	12.70
12-SLW033-039	9.53	5.08	3.30	12.70	3.94	12.70
12-SLW033-045	9.53	5.08	3.30	12.70	4.57	12.70
12-SLW033-053	9.53	5.08	3.30	12.70	5.31	12.70
12-SLW033-063	9.53	5.08	3.30	12.70	6.35	12.70
12-SLW033-035	12.70	5.08	3.30	12.70	3.56	12.70
12-SLW033-039	12.70	5.08	3.30	12.70	3.94	12.70
12-SLW033-045	12.70	5.08	3.30	12.70	4.57	12.70
12-SLW033-050	12.70	5.08	3.30	12.70	5.08	12.70
12-SLW033-069	12.70	5.08	3.30	12.70	6.99	12.70
12-SLW033-099	12.70	5.08	3.30	12.70	9.91	12.70
12-SLW033-115	12.70	5.08	3.30	12.70	11.56	12.70
12-SLW045-060	12.70	5.08	4.57	12.70	6.05	12.70
12-SLW069-095	12.70	5.08	6.99	12.70	9.53	12.70
12-SLW055-055	18.19	5.08	5.54	12.70	5.54	12.70
12-SLW095-130	19.99	5.08	9.53	12.70	13.00	12.70
12-SLW140-175	19.99	5.08	14.00	12.70	17.50	12.70
12-SLW095-115	22.00	5.08	9.53	12.70	11.56	12.70