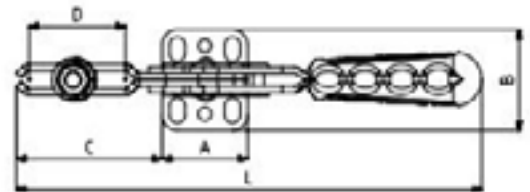
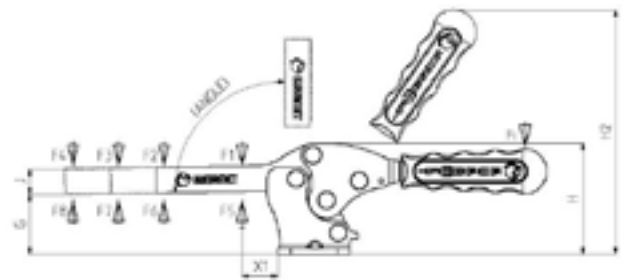


111 - Horizontal Toggle Clamps

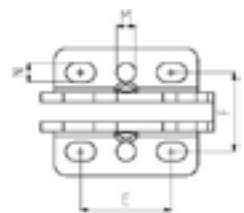
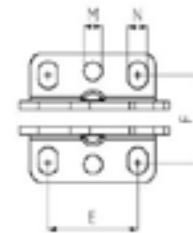
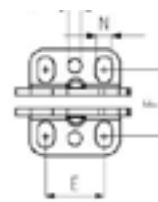
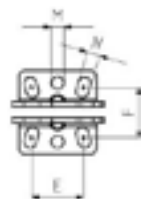
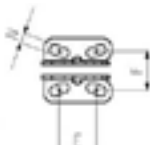
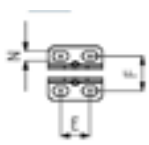
Body Mounting Base: Horizontal

Part Number	F1 (N)	F2 (N)	F3 (N)	F4 (N)	Fi		Compression Screw	Angle
					F1:Fi	F2:Fi		
19-111-0-M	450	300	520	350	5:1	2:1	M4 x 25	90°
19-111-1	850	650	1000	800	7:1	3:1	M5 x 35	90°
19-111-2	1000	750	1200	1000	7:1	3:1	M6 x 40	90°
19-111-3	2300	1250	2500	1350	8:1	4:1	M8 x 50	90°
19-111-4	3500	1800	3650	2000	9:1	4:1	M10 x 70	90°
19-111-5	4500	2000	5000	2125	10:1	5:1	M12 x 80	90°

F1-F2 Exerting Force. F3-F4 Holding Capacity. Fi Applied Force



111-0-M



19-111-0M

19-111-1

19-111-2

19-111-3

19-111-4

19-111-5

Part Number	A	B	C	D	E	F	G	H	H2	J	K	L	M	N	X1	X2
19-111-0-M	25	25	25.5	13	11-16	16	15	24	60	7.5	M4	82.5	-	4.5 x 7	11	18
19-111-1	33.5	32	43	28	13.5-23	17.5-20.5	21	40	95	10	M5	148	-	5 x 10	15	33
19-111-2	37	40	66	47	23.5-26	20-27.5	28	51	110	14	M6	184	6	6x 10	19	54
19-111-3	39.5	46.5	68	42	25.5	24-32.5	34	61	136	14	M8	215	6	7 x 11.5	25	53
19-111-4	58	60	100	73	41.5	36-43	45	82	175	19	M10	296	8.5	9 x 12.5	27	83
19-111-5	75	66	129	92	42-53	42	55	104	218	25.5	M12	345	10	10x 15.5	37	107